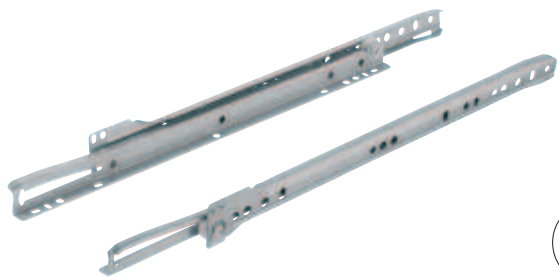


Single extension

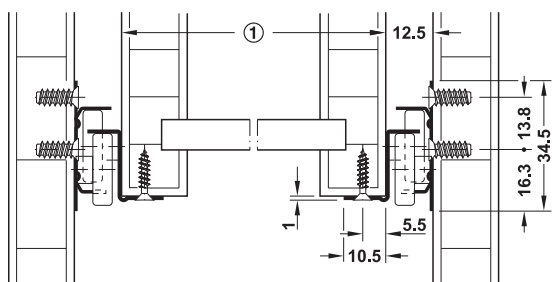
Load bearing capacity up to 20 kg



- Version: Type of closing: Self-closing, bearing: 4 friction bearing mounted polyamide rollers
- Adjustment facility: Height adjustment via slotted holes in cabinet rail
- Material: Steel
- Finish/colour: Powder coated, white, RAL 9003, white aluminium, similar to RAL 9006
- Material thickness: 0.85 or 1 mm
- Dim.: max. drawer width = internal cabinet width – 25 mm
- Installation: At drawer, base mounted
- Side stability provided by automatic guidance on the right hand side



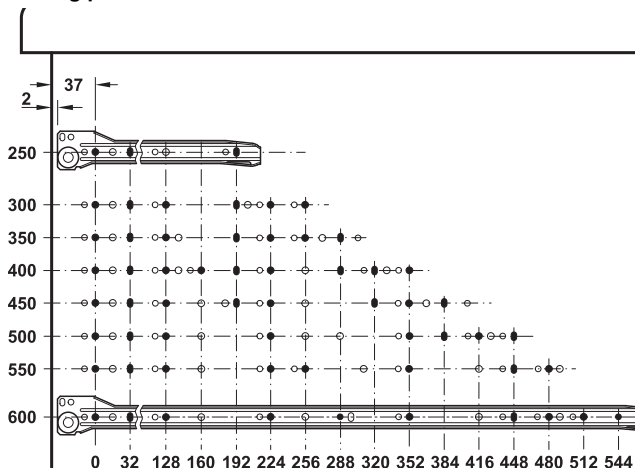
Installation



① max. drawer width = internal cabinet width – 25 mm



Drilling pattern



Installation length L mm	Extension length AL mm
250	165
300	215
350	265
400	305
450	355
500	405
550	435
600	485

Installation length L mm	Packing pairs	Load bearing capacity kg	White, RAL 9003 0.85 mm	White aluminium, RAL 9006 0.85 mm
250	1 or 20	15	431.16.700	431.16.200
300	1 or 20	15	431.16.701	431.16.201
350	1 or 20	15	431.16.702	431.16.202
400	1 or 20	15	431.16.703	431.16.203
450	1 or 20	15	431.16.704	431.16.204
500	1 or 10	15	431.16.705	431.16.205
550	1 or 10	12	431.16.706	431.16.206
600	1 or 10	12	431.16.707	431.16.207

Installation length L mm	Packing pairs	Load bearing capacity kg	White, RAL 9003 1 mm	White aluminium, RAL 9006 1 mm
250	1 or 20	20	431.16.710	431.16.210
300	1 or 20	20	431.16.711	431.16.211
350	1 or 20	20	431.16.712	431.16.212
400	1 or 20	20	431.16.713	431.16.213
450	1 or 20	20	431.16.714	431.16.214
500	1 or 10	20	431.16.715	431.16.215
550	1 or 10	17	431.16.716	431.16.216
600	1 or 10	17	431.16.717	431.16.217

Soft and controlled closing mechanism ► FF 8.53

Information ► FF 8.48

DGH-M-INT 2013, HDE-en, 01/13, Dimensional data not binding. We reserve the right to alter specifications without notice.